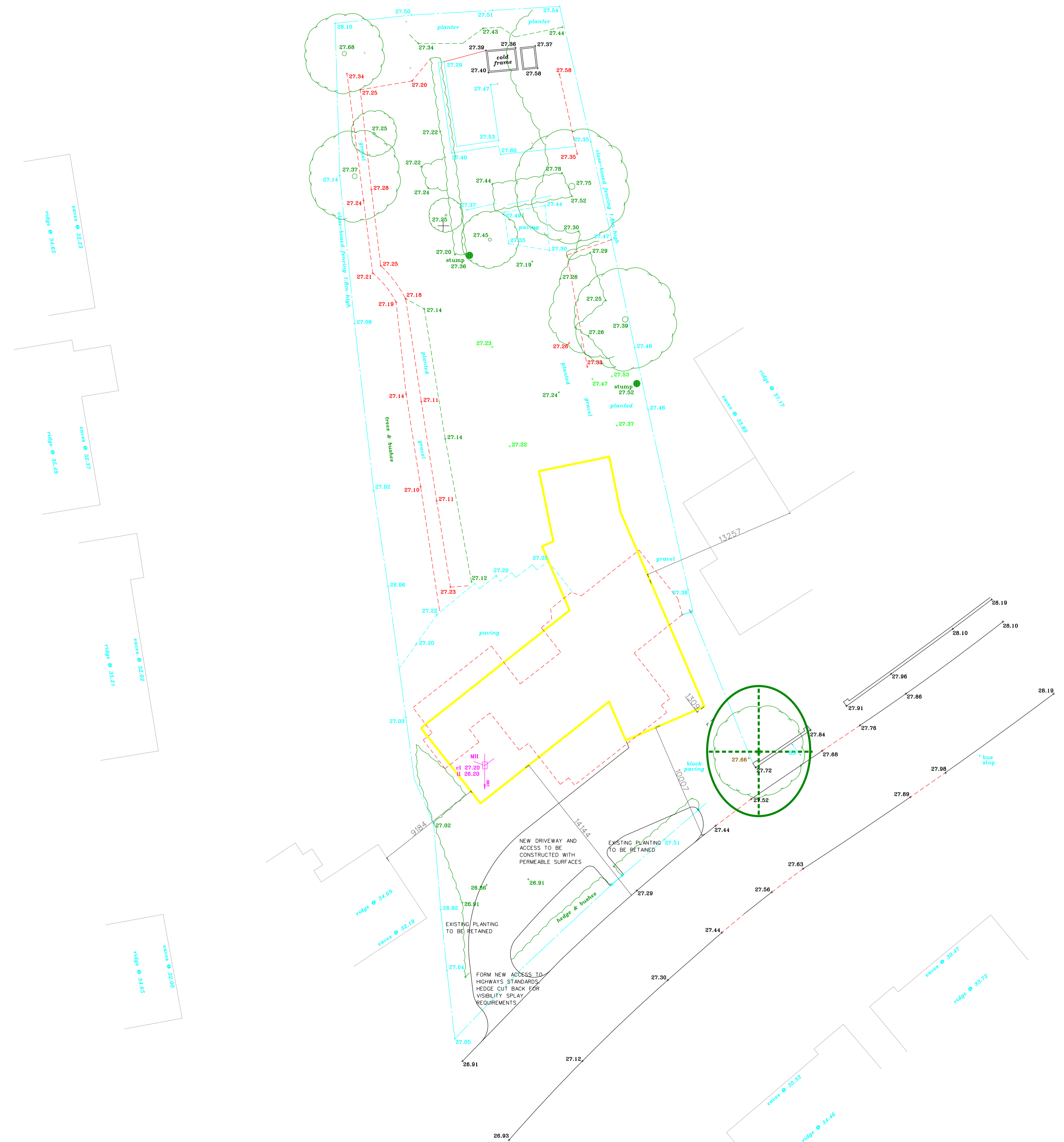


LEGEND

▲	Survey Station
□	Sq. Manhole / Inspection Cover
○	Circular Manhole / Inspection Cover
□	BT Comm. Chamber
□	Comm. Cabinet
■	Belland
●	TP - Trip pole
●	EP - Hot pole
●	LP - Lamp Column
○	Gas Valve
○	WM - Water Meter
○	SV - Water Stop Valve
○	RS - Road Sign
○	FH - Fire Hydrant
○	G - Road Gully
○	Ticket machine
○	Provision call button post
○	PT - Pillar box
○	Bench seating
—	Overhead electricity
—	Planters PL
—	Top embankment
—	Bottom embankment
—	Tarmac footpath / Surface change
—	Services Excavation Scar
—	Tackle paving
—	Crack barrier fencing
—	Peak & wire fencing
—	Concrete / paving
—	Block paving



NEW DRIVEWAY AND ACCESS TO BE CONSTRUCTED WITH PERMEABLE SURFACES

EXISTING PLANTING TO BE RETAINED

EXISTING PLANTING TO BE RETAINED

FORM NEW ACCESS TO HIGHWAYS STANDARDS. HEDGE CUT EACH FOR VISIBILITY SPLAY REQUIREMENTS